



## **2021 Reset Instructions**

## **2021 RESET OVERVIEW**

- 1) Before beginning the reset, make sure the current modular non-working displays are 100% set. If any non-working displays are missing, work with your store manager to order through GNFR
- 2) Locate all new HART, HyperTough, & Dremel non-working displays for the 2021 Reset. These will ship to stores in individual boxes. Each box should contain:
  - Non-Working Display
  - Tool Fixture/Cradle
  - Security Cable
  - (2) Locking Nuts
  - Fact Tag

### **New Non-Working Displays for 2021**

- HART 3/8" Ratchet Kit – unavailable until May
- HART 1/2" Impact Wrench Kit – unavailable in some stores until late June
- HART High Performance Reciprocating Saw
- Dremel 7350
- All new HyperTough tools will be replaced with new updated color, brand language

### **Exiting Non-Working Displays for 2021**

- HART Radio
- HART Inflator
- HART Hand Vacuum
- HART Brushless 1/2" Drill – in select stores
- HART Brushless Impact Driver – in select stores
- HART Multi-Tool – in select stores
- All current HyperTough displays
- Dremel 7300

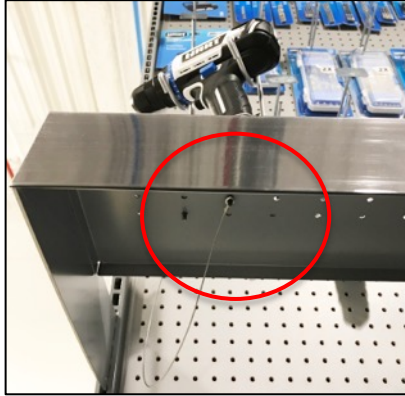
Take all old displays to the claims desk

## **2021 RESET INSTRUCTIONS**

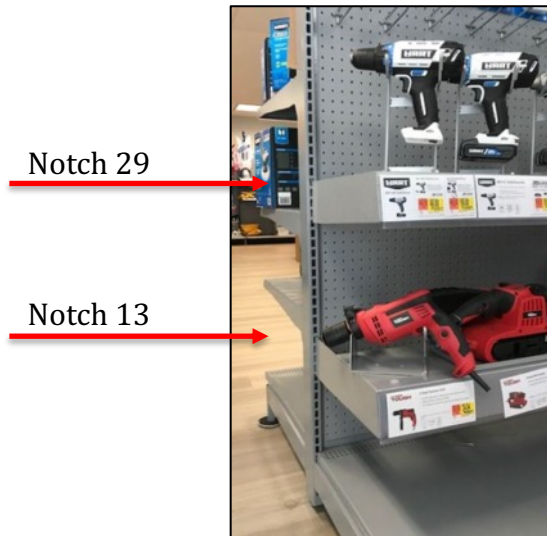
Reference each store specific MOD trait to confirm new displays

**\*\*These changes will apply to the majority of stores**

- 1) Use a 3/8" nut driver or 10 MM to remove the locking nut holding the security cable to the fixture underneath each shelf. Note: not all drills in section 1 will need to be moved, so review the MOD before unsecuring from the shelf.



- 2) Confirm all the shelves are at the correct height. If not adjust the shelves to the notches as shown below:



The top display shelf will be placed 29 notches from the base deck.

If your store requires a bottom display shelf, it should be placed 13 notches above base deck.

NOTE: The first open notch above the base deck is 1.

## **2021 RESET INSTRUCTIONS**

### **\*\*IN MOST MODS**

- 3) The lower shelf in section 5 will move to section 6.
- 4) Rotary tools will move from section 6 to section 3.
- 5) The following display tools will need to be removed permanently from the MOD (take these items to the claims desk)
  - HR Brushless Drill/Impact – in select stores
  - HR Brushless Impact Driver – in select stores
  - HR Multi-Tool – in select stores
  - HR 20V Radio
  - HR 20V Inflator
  - HR 20V Hand Vacuum
  - Dremel 7300
  - All HyperTough Displays
- 6) Work section by section to re-arrange display placement, adding in new non-working displays as needed (see the following pages). All cradles should be oriented so that the left stem is placed on the top row of holes. Reference image is below
- 7) Hold onto tool cradles until MOD reset is complete



# 2021 RESET INSTRUCTIONS

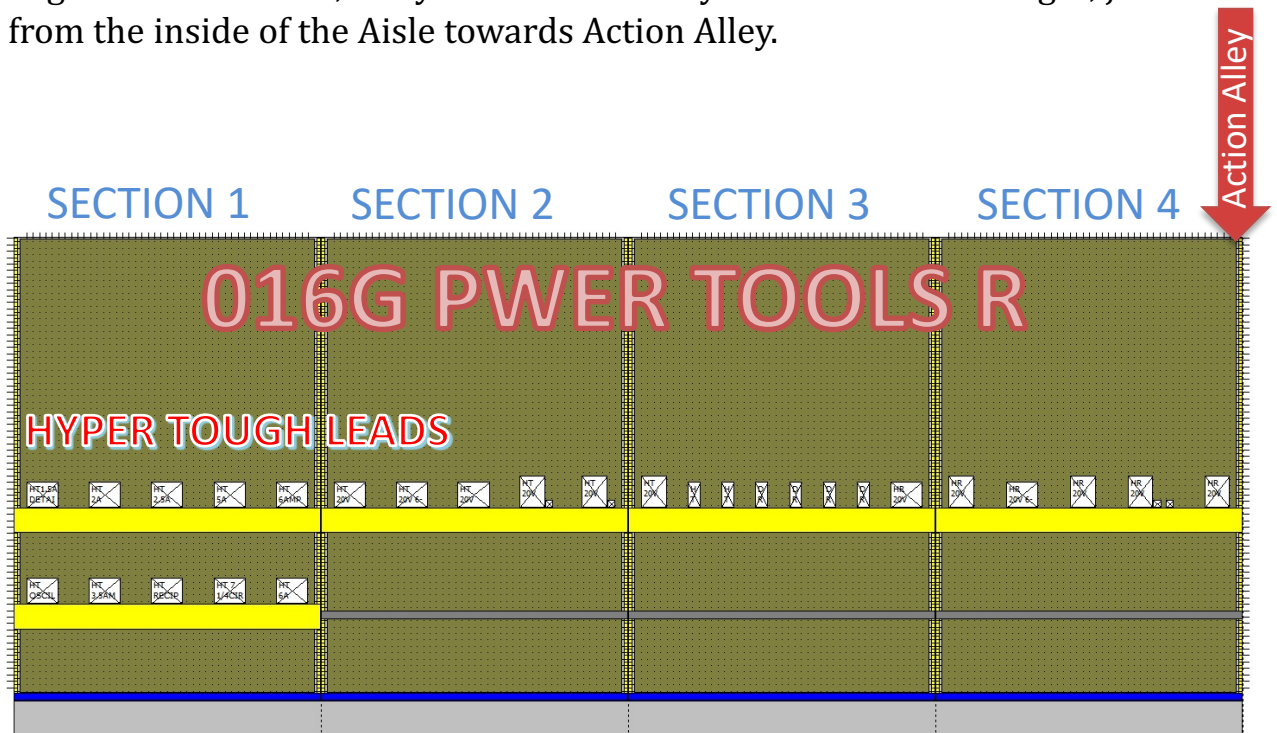
- 8) Once all displays have been moved, secure fixtures back to the shelf using a 3/8" nut driver.
- 9) Place fact tags under each corresponding display along with price label.

**Instructions for additional mod traits can be found :**

[www.TTIstoresetup.com](http://www.TTIstoresetup.com)

## **Right Sided Modulars:**

If your store has a right sided MOD, if you are looking at the Aisle, section 1 begins on the far left, away from Action Alley. Still work Left to Right, just from the inside of the Aisle towards Action Alley.



# 2021 RESET INSTRUCTIONS

MODULAR TRAIT: 024G URB PWRTL L ~ 198 Team HART stores

Reference each store specific MOD trait to confirm new displays

## Section One – Before

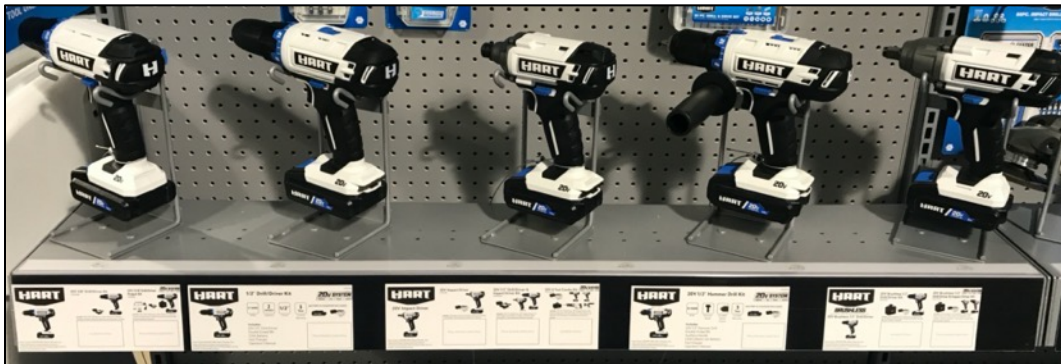


From Left to Right:

- HR 3/8" Drill
- HR 1/2" Drill
- HR Impact Driver
- HR Hammer Drill
- HR Jigsaw

## Section One – After

Remove HART Jigsaw from section 1 (moves to section 2) and add in the new HART 1/2" Impact Wrench display. **\*\*If new displays are unavailable, leave spots open.**



From Left to Right:

- HR 3/8" Drill
- HR 1/2" Drill
- HR Impact Driver
- HR Hammer Drill
- HR 1/2" Impact Wrench

# 2021 RESET INSTRUCTIONS

MODULAR TRAIT: 024G URB PWRTL L

## Section Two – Before



From Left to Right:

- HR Recip
- HR Circular Saw
- HR RO Sander
- HR Angle Grinder

## Section Two – After

Add in the Jigsaw display to section 2 and rearrange remaining tools per the MOD drawing.



From Left to Right:

- HR Angle Grinder
- HR Jigsaw
- HR Recip
- HR Circular Saw
- HR RO Sander

# 2021 RESET INSTRUCTIONS

MODULAR TRAIT: 024G URB PWRTL L

## Section Three – Before



From Left to Right:

- HR Multi-Tool
- HR Inflator
- HR Hand Vac
- HR Radio
- HT 18V NiCad Drill
- HT 20V Drill

## Section Three – After

Remove the Inflator, Hand Vac, Radio, & HyperTough Displays. Bring the Rotary Tools up to Section 3 and add in the new Dremel 7350 (replaces Dremel 7300).



From Left to Right:

- HR Multi-Tool
- HR Rotary Tool
- Dremel 7350
- Dremel 7760
- Dremel 100
- Dremel Stylo+
- Dremel 3000



# 2021 RESET INSTRUCTIONS

MODULAR TRAIT: 024G URB PWRTL L

## Section Four – Before



From Left to Right:

- HT Impact Driver
- HT Hammer Drill
- HT Recip Saw
- HT Circular Saw
- HT Angle Grinder

## Section Four – After

Add the HyperTough Rotary Tools to the far left and begin to add in the new HyperTough displays



From Left to Right:

- HT 8V Rotary +40
- HT Rotary +105
- HT 8V Drill
- HT Drill
- HT Impact Driver
- HT Hammer Drill
- HT Angle Grinder

# 2021 RESET INSTRUCTIONS

MODULAR TRAIT: 024G URB PWRTL L

## Section Five – Before

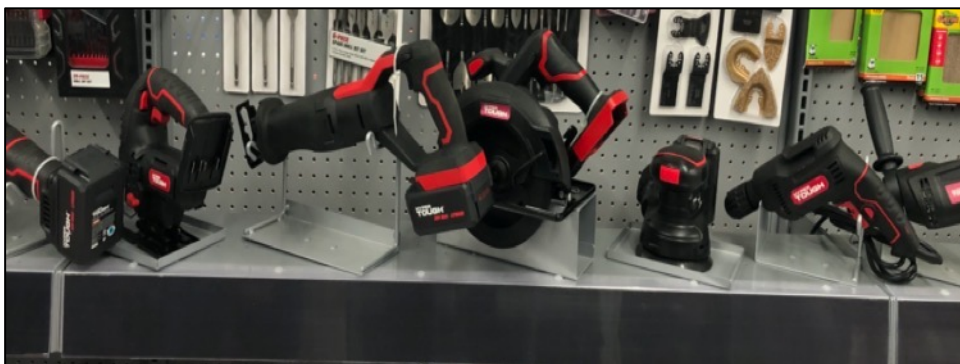


From Left to Right:

- HT 5A Corded Drill
- HT ¼ Sheet Sander
- HT Orbit Sander
- HT Detail Sander
- HT Angle Grinder

## Section Five – After

**\*\*Make sure the bottom shelf has been removed and is now in the 6<sup>th</sup> section before moving around the displays**



From Left to Right:

- HT Jigsaw
- HT Recip Saw
- HT Circular Saw
- HT RO Sander (not pictured)
- HT 5A Corded Drill

# 2021 RESET INSTRUCTIONS

MODULAR TRAIT: 024G URB PWRTL L

## Section Six A – Before



From Left to Right:

- HT Oscillating Tool
- HT Rotary +105
- HT 8V Rotary +40
- Dremel 100
- Dremel Stylo+ Tool
- Dremel 3000
- Dremel 7300
- Dremel 7760
- HR Rotary Tool

## Section Six A – After



From Left to Right:

- HT 6A Hammer Drill
- HT ¼ Sheet Sander
- HT Orbit Sander
- HT Detail Sander
- HT Oscillating Tool

# **2021 RESET INSTRUCTIONS**

MODULAR TRAIT: 024G URB PWRTL L

**Section Six B – N/A**

**Section Six B – After**

All remaining corded HyperTough tools move to the bottom shelf in the 6<sup>th</sup> section



From Left to Right:

- HT 6A Belt Sander
- HT 3.5A Jigsaw
- HT Recip Saw
- HT 7-1/4 Circ Saw

Place in corresponding fact tags and price labels. After you have completed the reset, review all changes with the Department Manager.