



2021 Reset Instructions

2021 RESET OVERVIEW

- 1) Before beginning the reset, make sure the current modular non-working displays are 100% set. If any non-working displays are missing, work with your store manager to order through GNFR
- 2) Locate all new HART & HyperTough non-working displays for the 2021 Reset. These will ship to stores in individual boxes. Each box should contain:
 - Non-Working Display
 - Tool Fixture/Cradle
 - Security Cable
 - (2) Locking Nuts & (1) Hex Key
 - Fact Tag

New Non-Working Displays for 2021

- HART 3/8" Ratchet Kit
- HART 1/2" Impact Wrench Kit
- HART High Performance Reciprocating Saw
- HyperTough 20V RO Sander
- HyperTough 20V Jigsaw
- Dremel 7350
- All new HyperTough Displays

Exiting Non-Working Displays for 2021

- HART Radio
- HART Inflator
- HART Hand Vacuum
- HART Brushless 1/2" Drill – in select stores
- HART Brushless Impact Driver – in select stores
- HART Multi-Tool – in select stores
- HyperTough Ni-Cad Drill
- Dremel 7300

Take all old displays to the claims desk

2021 RESET INSTRUCTIONS

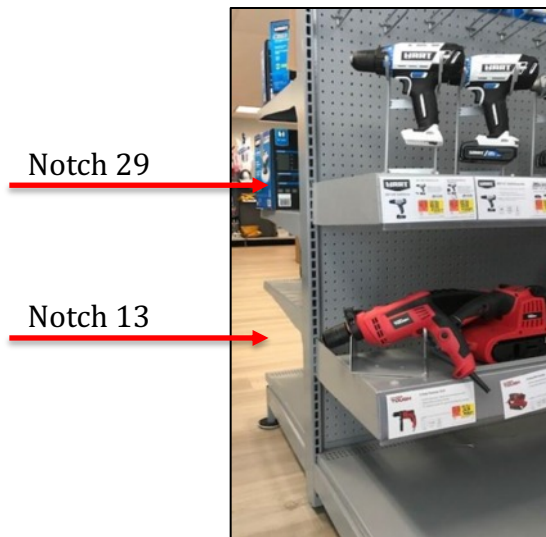
Reference each store specific MOD trait to confirm new displays

****These changes will apply to the majority of stores**

- 1) Use a 3/8" nut driver to remove the locking nut holding the security cable to the fixture underneath each shelf. Note: not all drills in section 1 will need to be moved, so review the MOD before unsecuring from the shelf.



- 2) Confirm all the shelves are at the correct height. If not adjust the shelves to the notches as shown below:



The top display shelf will be placed 29 notches from the base deck.

If your store requires a bottom display shelf, it should be placed 13 notches above base deck.

NOTE: The first open notch above the base deck is 1.

2021 RESET INSTRUCTIONS

- 3) The lower shelf in section 4 will move to section 5.
- 4) Rotary tools will move from section 5 to section 3.
- 5) The following display tools & fixtures will need to be removed permanently from the MOD (take these items to the claims desk)
 - HR Brushless Drill/Impact – in select stores
 - HR Brushless Impact Driver – in select stores
 - HR Multi-Tool – in select stores
 - HR 20V Radio
 - HR 20V Inflator
 - HR 20V Hand Vacuum
 - HT 18V Ni-Cad
 - Dremel 7300
 - All HyperTough Displays
- 6) Work section by section to re-arrange display placement, adding in new non-working displays as needed (see the following pages). All cradles should be oriented so that the left stem is placed on the top row of holes. Reference image is below
- 7) Hold onto tool cradles until MOD reset is complete



2021 RESET INSTRUCTIONS

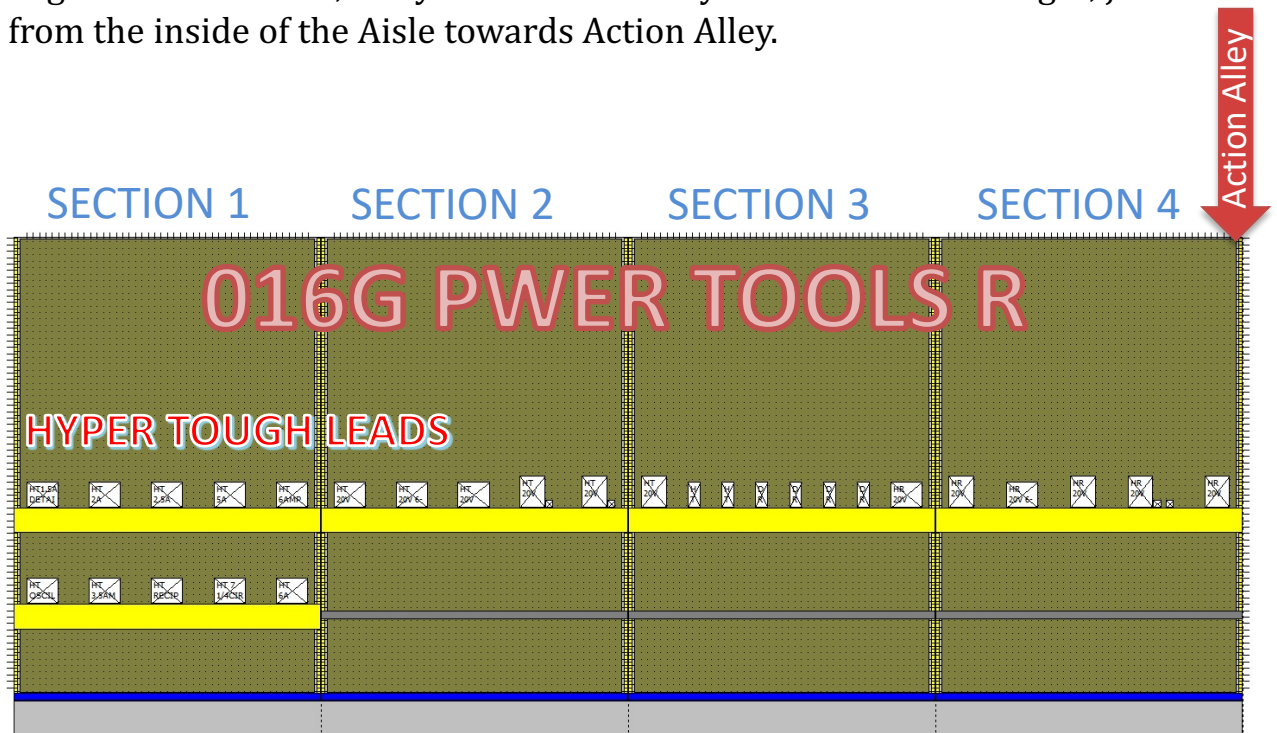
- 8) Once all displays have been moved, secure fixtures back to the shelf using a 3/8" nut driver.
- 9) Place fact tags under each corresponding display along with price label.

Instructions for additional mod traits can be found :

www.TTIstoresetup.com

Right Sided Modulars:

If your store has a right sided MOD, if you are looking at the Aisle, section 1 begins on the far left, away from Action Alley. Still work Left to Right, just from the inside of the Aisle towards Action Alley.



2021 RESET INSTRUCTIONS

MODULAR TRAIT: 020G RUR PWERTOOLS L

Reference each store specific MOD trait to confirm new displays

Section One – Before



From Left to Right:

- HR 3/8” Drill
- HR ½” Drill
- HR Impact Driver
- HR Brushless ½” Drill
- HR Brushless Drill/Impact
- HR Jigsaw

Section One – After

Remove HART Jigsaw from section 1 (moves to section 2) and add in the new HART ½” Impact Wrench display. ****If new displays are unavailable, leave spots open.**



From Left to Right:

- HR 3/8” Drill
- HR ½” Drill
- HR Impact Driver
- HR Hammer Drill
- HR Brushless ½” Drill
- HR ½” Impact Wrench

2021 RESET INSTRUCTIONS

MODULAR TRAIT: 020G RUR PWERTOOLS L

Section Two – Before

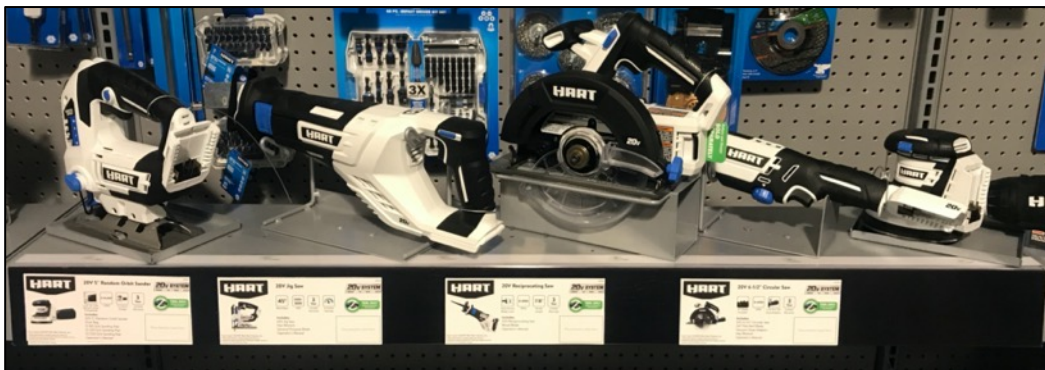


From Left to Right:

- HR Recip
- HR Circular Saw
- HR RO Sander
- HR Angle Grinder
- HR Hand Vacuum
- HR Inflator

Section Two – After

Remove Hart Hand Vac & Inflator from section. Hart Jigsaw moves down to section 2 and rearrange the order of the rest of the displays.



From Left to Right:

- HR Jigsaw
- HR Recip Saw
- HR Circular Saw
- HR Multi Tool
- HR RO Sander

2021 RESET INSTRUCTIONS

MODULAR TRAIT: 020G RUR PWERTOOLS L

Section Three – Before



From Left to Right:

- HT 18V NiCad Drill
- HT 20V Drill
- HT Impact Driver
- HT Hammer Drill
- HT Angle Grinder
- HT Recip Saw

Section Three – After

Bring the Rotary Tools up to Section 3 and add in the new Dremel 7350 (replaces Dremel 7300).

From Left to Right:

- HR Rotary Tool
- Dremel 7350
- Dremel 7760
- Dremel 100
- Dremel 3000
- HT Rotary +105
- HT 8V Rotary +40
- HT 20V Drill

2021 RESET INSTRUCTIONS

MODULAR TRAIT: 020G RUR PWERTOOLS L

Section Four – Before



From Left

- HT 20V Circular Saw
- HT 5A Corded Drill
- HT 6A Hammer Drill
- HT ¼ Sheet Sander
- HT Orbit Sander

Section Four – After

****Make sure the bottom shelf has been removed and is now in the 5th section before moving around the displays**

Begin adding in new HyperTough Displays.

From Left to Right:

- HT 20V Impact Driver
- HT 20V Hammer Drill
- HT 20V Angle Grinder
- HT 20V Jigsaw
- HT 20V Recip
- HT 20V Circ Saw

2021 RESET INSTRUCTIONS

MODULAR TRAIT: 020G RUR PWERTOOLS L

Section Five A – Before



From Left to Right:

- HT Detail Sander
- HT Oscillating Tool
- HT Rotary +105
- HT 8V Rotary +40
- Dremel 100
- Dremel 3000
- Dremel 7300
- Dremel 7760
- HR Rotary Tool

Section Five A – After

All HyperTough corded sanders move down one section.

From Left to Right:

- HT 5A Corded Drill
- HT 6A Hammer Drill
- HT 6A Angle Grinder
- HT ¼ Sheet Sander
- HT Orbit Sander
- HT Detail Sander

2021 RESET INSTRUCTIONS

MODULAR TRAIT: 020G PWERTOOLS L

Section Five B – N/A

Section Five B – After

All remaining corded HyperTough tools move to the bottom shelf in the 5th section

From Left to Right:

- HT 6A Belt Sander
- HT Oscillating Tool
- HT 3.5A Jigsaw
- HT Recip Saw
- HT 7-1/4 Circ Saw

Place in corresponding fact tags and price labels. After you have completed the reset, review all changes with the Department Manager.