



## **2021 Reset Instructions**

## **2021 RESET OVERVIEW**

- 1) Before beginning the reset, make sure the current modular non-working displays are 100% set. If any non-working displays are missing, work with your store manager to order through GNFR
- 2) Locate all new HART & HyperTough non-working displays for the 2021 Reset. These will ship to stores in individual boxes. Each box should contain:
  - Non-Working Display
  - Tool Fixture/Cradle
  - Security Cable
  - (2) Locking Nuts & (1) Hex Key
  - Fact Tag

### **New Non-Working Displays for 2021**

- HART 3/8" Ratchet Kit
- HART 1/2" Impact Wrench Kit
- HART High Performance Reciprocating Saw
- HyperTough 20V RO Sander
- HyperTough 20V Jigsaw
- Dremel 7350
- All new HyperTough tools will be replaced with new updated color, brand language

### **Exiting Non-Working Displays for 2021**

- HART Radio
- HART Inflator
- HART Hand Vacuum
- HART Brushless 1/2" Drill – in select stores
- HART Brushless Impact Driver – in select stores
- HART Multi-Tool – in select stores
- HyperTough Ni-Cad Drill
- Dremel 7300

Take all old displays to claims desk

# 2021 RESET INSTRUCTIONS

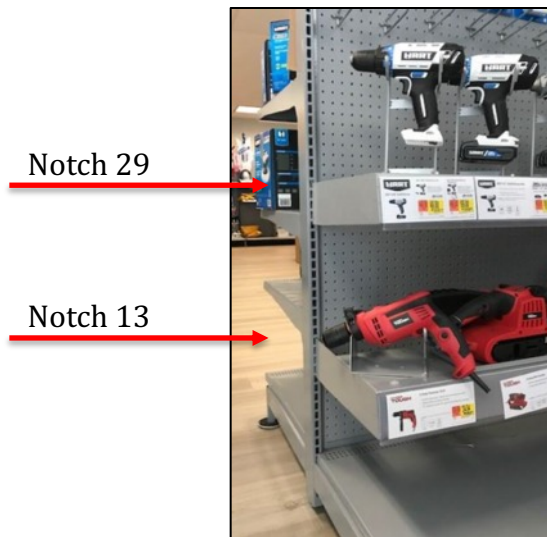
Reference each store specific MOD trait to confirm new displays

**\*\*These changes will apply to the majority of stores**

- 1) Use a 3/8" nut driver to remove the locking nut holding the security cable to the fixture underneath each shelf. Note: not all drills in section 1 will need to be moved, so review the MOD before unsecuring from the shelf.



- 2) Confirm all the shelves are at the correct height. If not adjust the shelves to the notches as shown below:



The top display shelf will be placed 29 notches from the base deck.

If your store requires a bottom display shelf, it should be placed 13 notches above base deck.

NOTE: The first open notch above the base deck is 1.

## **2021 RESET INSTRUCTIONS**

- 3) Rotary tools will move from section 4 to section 2.
- 4) The following display tools & fixtures will need to be removed permanently from the MOD (take these items to the claims desk)
  - HR Brushless Drill/Impact – in select stores
  - HR Brushless Impact Driver – in select stores
  - HR Multi-Tool – in select stores
  - HR 20V Radio
  - HR 20V Inflator
  - HR 20V Hand Vacuum
  - HT 18V Ni-Cad
  - Dremel 7300
  - All HyperTough Displays
- 5) Work section by section to re-arrange display placement, adding in new non-working displays as needed (see the following pages). All cradles should be oriented so that the left stem is placed on the top row of holes. Reference image is below
- 6) Hold onto tool cradles until MOD reset is complete



# 2021 RESET INSTRUCTIONS

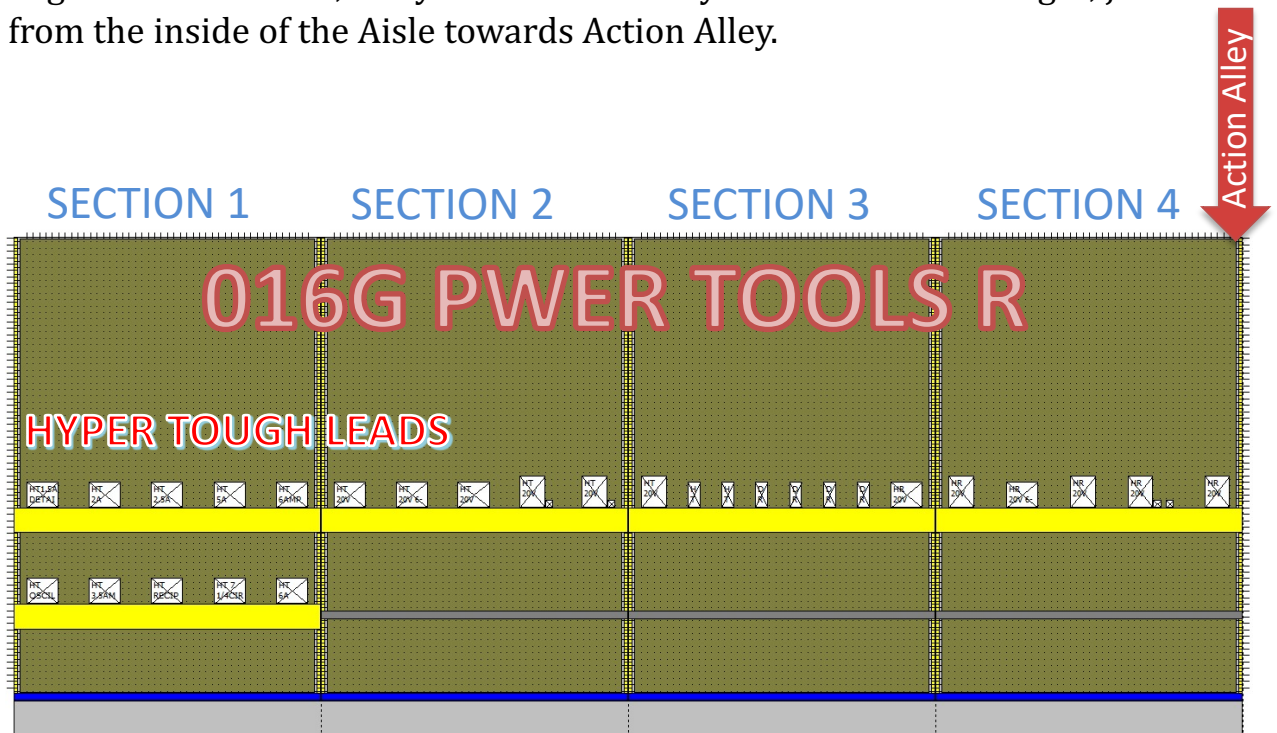
- 8) Once all displays have been moved, secure fixtures back to the shelf using a 3/8" nut driver.
- 9) Place fact tags under each corresponding display along with price label.

**Instructions for additional mod traits can be found :**

[www.TTIstoresetup.com](http://www.TTIstoresetup.com)

## **Right Sided Modulars:**

If your store has a right sided MOD, if you are looking at the Aisle, section 1 begins on the far left, away from Action Alley. Still work Left to Right, just from the inside of the Aisle towards Action Alley.



# **2021 RESET INSTRUCTIONS**

MODULAR TRAIT: 016G PWERTOOLS L

Reference each store specific MOD trait to confirm new displays

## **Section One – Before**

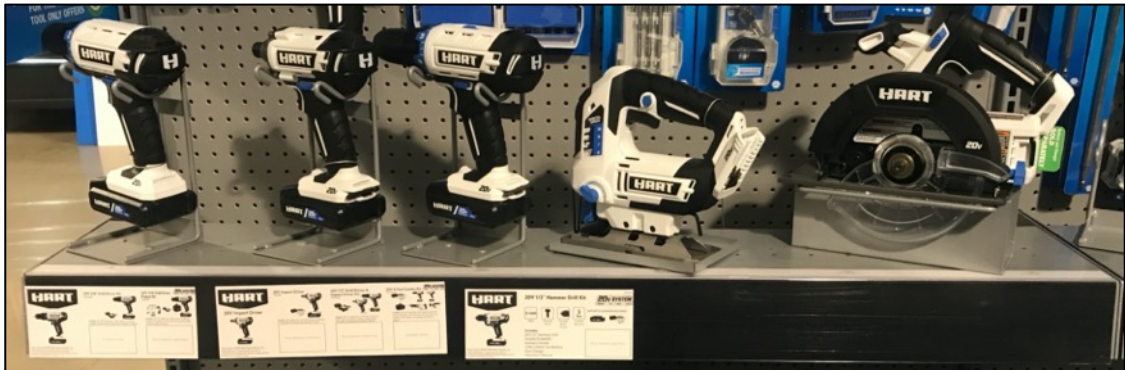


From Left to Right:

- HR 3/8" Drill
- HR 1/2" Drill
- HR Impact Driver
- HR Jigsaw
- HR Circular Saw

## **Section One – After**

Switch the order of the HART 1/2" Drill & HART Impact Driver



From Left to Right:

- HR 3/8" Drill
- HR Impact Driver
- HR 1/2" Drill
- HR Jigsaw
- HR Circular Saw

# **2021 RESET INSTRUCTIONS**

MODULAR TRAIT: 016G PWERTOOLS L

## **Section Two – Before**



From Left to Right:

- HR Inflator
- HT 18V NiCad Drill
- HT 20V Drill
- HT 20V Impact Driver
- HT 20V Hammer Drill
- HT 20V Recip

## **Section Two – After**

Remove Hart Inflator & all HyperTough displays from section 2. Add in HART RO Sander and move up all Rotary Tools.

From Left to Right:

- HR RO Sander
- Dremel 7350
- Dremel 7760
- Dremel 100
- Dremel 3000
- HT 8V Rotary +40
- HT Rotary +105

# **2021 RESET INSTRUCTIONS**

MODULAR TRAIT: 016G PWERTOOLS L

## **Section Three - Before**



From Left to Right:

- HT 20V Circular Saw
- HT 20V Angle Grinder
- HT ¼ Sander
- HT 2.5A Orbit Sander
- HT 1.5 Detail Sander

## **Section Three - After**

Start adding in new HyperTough display tools.

From Left to Right:

- HT 20V Drill
- HT 20V Impact Driver
- HT 20V Hammer Drill
- HT 20V Angle Grinder
- HT 20V Recip Saw



# **2021 RESET INSTRUCTIONS**

MODULAR TRAIT: 016G PWERTOOLS L

## **Section Four A – Before**



From Left to Right:

- HT Angle Grinder
- HT Oscillating Tool
- HT Rotary +105
- HT 8V Rotary +40
- Dremel 100
- Dremel 3000
- Dremel 7300
- Dremel 7760

## **Section Four A – After**

Switch out all HyperTough Displays

From Left to Right:

- HT 20V 6-1/2 Circ Saw
- HT Detail Sander
- HT ¼ Sheet Sander
- HT Orbit Sander
- HT Oscillating Tool

# **2021 RESET INSTRUCTIONS**

MODULAR TRAIT: 016G PWERTOOLS L

## **Section Four B – Before**



From Left to Right:

- HT 5A Corded Drill
- HT 6A Hammer Drill
- HT 3.5A Jigsaw
- HT Recip Saw
- HT 7-1/4 Circ Saw

## **Section Four B – After**

All remaining corded HyperTough tools move to the bottom shelf in the 4<sup>th</sup> section

From Left to Right:

- HT 5A Corded Drill
- HT 6A Hammer Drill
- HT 3.5A Jigsaw
- HT Recip Saw
- HT 7-1/4 Circ Saw

Place in corresponding fact tags and price labels. After you have completed the reset, review all changes with the Department Manager.