



2021 Reset Instructions

2021 RESET OVERVIEW

- 1) Before beginning the reset, make sure the current modular non-working displays are 100% set. If any non-working displays are missing, work with your store manager to order through GNFR
- 2) Locate all new HART & HyperTough non-working displays for the 2021 Reset. These will ship to stores in individual boxes. Each box should contain:
 - Non-Working Display
 - Tool Fixture/Cradle
 - Security Cable
 - (2) Locking Nuts & (1) Hex Key
 - Fact Tag

New Non-Working Displays for 2021

- HART 3/8" Ratchet Kit
- HART 1/2" Impact Wrench Kit
- HART High Performance Reciprocating Saw
- HyperTough 20V RO Sander
- HyperTough 20V Jigsaw
- Dremel 7350
- All new HyperTough tools will be replaced with new updated color, brand language

Exiting Non-Working Displays for 2021

- HART Radio
- HART Inflator
- HART Hand Vacuum
- HART Brushless 1/2" Drill – in select stores
- HART Brushless Impact Driver – in select stores
- HART Multi-Tool – in select stores
- HyperTough Ni-Cad Drill
- Dremel 7300

Take all old displays to the claims desk

2021 RESET INSTRUCTIONS

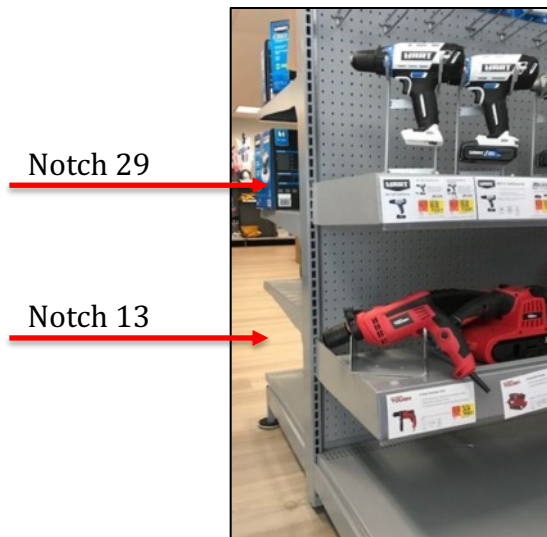
Reference each store specific MOD trait to confirm new displays

****These changes will apply to the majority of stores**

- 1) Use a 3/8" nut driver to remove the locking nut holding the security cable to the fixture underneath each shelf. Note: not all drills in section 1 will need to be moved, so review the MOD before unsecuring from the shelf.



- 2) Confirm all the shelves are at the correct height. If not adjust the shelves to the notches as shown below:



The top display shelf will be placed 29 notches from the base deck.

If your store requires a bottom display shelf, it should be placed 13 notches above base deck.

NOTE: The first open notch above the base deck is 1.

2021 RESET INSTRUCTIONS

- 3) Rotary tools will move from section 3 to section 1.
- 4) The following display tools & fixtures will need to be removed permanently from the MOD (take these items to the claims desk)
 - HR Brushless Drill/Impact – in select stores
 - HR Brushless Impact Driver – in select stores
 - HR Multi-Tool – in select stores
 - HR 20V Radio
 - HR 20V Inflator
 - HR 20V Hand Vacuum
 - HT 18V Ni-Cad
 - Dremel 7300
 - All HyperTough Displays
- 5) Work section by section to re-arrange display placement, adding in new non-working displays as needed (see the following pages). All cradles should be oriented so that the left stem is placed on the top row of holes. Reference image is below
- 6) Hold onto tool cradles until MOD reset is complete



2021 RESET INSTRUCTIONS

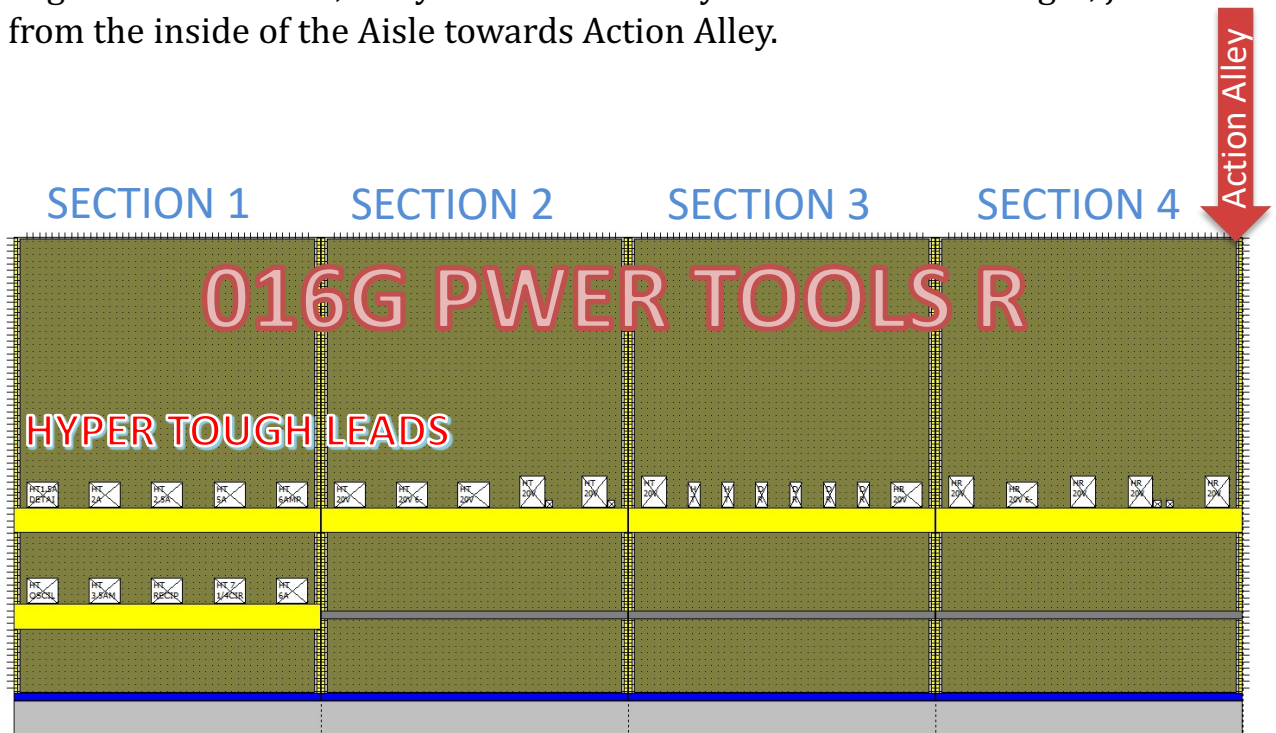
- 8) Once all displays have been moved, secure fixtures back to the shelf using a 3/8" nut driver.
- 9) Place fact tags under each corresponding display along with price label.

Instructions for additional mod traits can be found :

www.TTIstoresetup.com

Right Sided Modulars:

If your store has a right sided MOD, if you are looking at the Aisle, section 1 begins on the far left, away from Action Alley. Still work Left to Right, just from the inside of the Aisle towards Action Alley.



2021 RESET INSTRUCTIONS

MODULAR TRAIT: 012G PWERTOOLS L

Reference each store specific MOD trait to confirm new displays

Section One – Before



From Left to Right:

- HR 3/8" Drill
- HR ½" Drill
- HR Impact Driver
- HR Inflator
- HT 18V NiCad Drill
- HT 20V Lithium Drill

Section One – After

Switch the order of the HART ½" Drill & HART Impact Driver, remove the HART Jigsaw, Inflator and all HyperTough displays from section 1. Move up the 2 Rotary tools to section 1. Add in new HyperTough drill displays.



From Left to Right:

- HR 3/8" Drill
- HR Impact Driver
- HR ½" Drill
- HT 8V Rotary +40
- HT Rotary +105
- HR 20V Drill
- HR 20V Impact Driver

2021 RESET INSTRUCTIONS

MODULAR TRAIT: 012G PWERTOOLS L

Section Two – Before



From Left to Right:

- HT 20V Impact Driver
- HT 20V Angle Grinder
- HT Recip Saw
- HT 6-1/2 Circ Saw
- HT 5A Corded Drill
- HT Oscillating Tool

Section Two – After

Remove all current HyperTough displays from section 2 and update with new HyperTough displays.

From Left to Right:

- HT 20V Angle Grinder
- HT Recip Saw
- HT 6-1/2 Circ Saw
- HT 5A Corded Drill
- HT ¼ Sheet Sander

2021 RESET INSTRUCTIONS

MODULAR TRAIT: 016G PWERTOOLS L

Section Three - Before



From Left to Right:

- HT ¼ Sheet Sander
- HT 6A Angle Grinder
- HT 2.5A Jigsaw
- HT Recip Saw
- HT 8V Rotary +40
- Dremel 7760

Section Three - After

Add in remaining new HyperTough corded display tools.

From Left to Right:

- HT Oscillating Tool
- HT 6A Angle Grinder
- HT 2.5A Jigsaw
- HT Recip Saw